



STEMCO GAFF products provide superior mechanical properties, outstanding chemical resistance, improved design features, and more extensive part coverage.

DAF & Kenworth
To suit



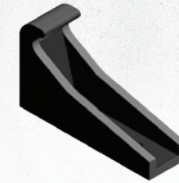
11615
FRONT MOTOR MOUNT
1x UPPER MOUNT, 1x LOWER MOUNT
OE# K066-404, K066-423, D13-1012, K066-406



11613
FRONT MOTOR MOUNT
3/4" BOLT, 97MM < 53MM O.D, 65MM TALL
OE# K066-229, AV018TRP, M700NR



11545
HOOD GUIDE
SUIT T3 / T4 / T6 / T9 / C5 SERIES
OE# K179-499



11097
HOOD LATCH - HOOK
SUIT T3 & T410 SERIES
USE WITH LATCH 12365 & 11134
OE# L03-0001, AV014TRP



11762
FRONT MOTOR MOUNT KIT
KIT INCLUDES 2x UPPER MOUNTS
2x LOWER MOUNTS, BOLTS, NUTS, WASHERS
OE# K066-404, K066-423, D13-1012, K066-406



11535
REAR MOTOR MOUNT
115MM LENGTH, 50MM WIDE
OE# K174-555



11848
HOOD SUPPORT
SUIT T410 / T610 SERIES
OE# L85-6081



11134
HOOD LATCH ASSEMBLY
SUIT T3 & T410 SERIES
INCLUDES BRACKET
OE# L56-0001, AV014TRP



11760
REAR MOTOR MOUNT KIT
KIT INCLUDES 2x UPPER MOUNTS
2x LOWER MOUNTS, BOLTS, NUTS, WASHERS
OE# K066-421, D13-1001-4, K066-377
K066-391, D13-1001-3, D13-1001-2, AV024TRP



11707
MOTOR MOUNT
5/8" BOLT, 64MM < 41MM O.D, 50MM
OE# M501, M501-70NR



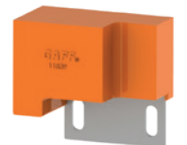
11843
UPPER HOOD HINGE BUSH
USED WITH 11844 LOWER MOUNT
2x UPPER & 2x LOWER PER VEHICLE
OE# K066-516, K066-462



12365
HOOD LATCH
SUIT T3 & T410 SERIES
ASSY 11134 INCLUDES BRACKET
OE# L56-0001, AV014TRP



11614
REAR MOTOR MOUNT
SUIT C5 / K2 SERIES
5/8" BOLT, 50MM WIDE, 59MM TALL
OE# M506-70NR, AV026TRP



11839
RIGHT HOOD SUPPORT
SUIT T4 / T6 / T9 / C5 SERIES
USED WITH 11840 & 11545
OE# R85-1236R, AV017TRP, K278-1342R



11844
LOWER HOOD HINGE BUSH
USED WITH 11843 UPPER MOUNT
2x UPPER & 2x LOWER PER VEHICLE
OE# K066-517, K066-463



11768
HOOD LATCH
OE# 37-99-344, 37-41-295-60



11837
REAR MOTOR MOUNT KIT
5/8" BOLT, 50MM WIDE, 59MM TALL
KIT INCLUDES 2x 11614, BOLTS, NUTS, WASHERS
OE# M506-70NR, AV026TRP



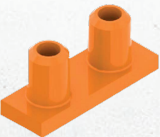
11840
LEFT HOOD SUPPORT
SUIT T4 / T6 / T9 / C5 SERIES
USED WITH 11839 & 11545
OE# R85-1236, AV017TRP, K278-1342



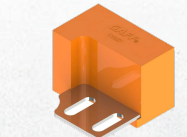
11860
UPPER HOOD HINGE BUSH
USED WITH 2x 12410 LOWER MOUNT
OE# L13-6006



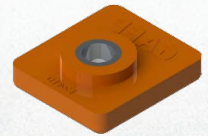
11543
HOOD LATCH
BALL STYLE LATCH
OE# K147-107, K147C106



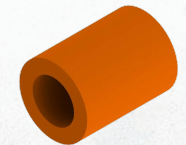
11539
REAR MOTOR MOUNT
SUIT T4 / T6 / T9 SERIES
5/8" BOLT, 50MM WIDE, 65MM TALL
OE# K066-282, AV025TRP



11857
RIGHT HOOD SUPPORT
SUIT T3 SERIES
USED WITH 11858 & 11545
OE# R85-1237R, R85-1252R



12410
LOWER HOOD HINGE BUSH
USED WITH 1x 11860 UPPER MOUNT
OE# L13-04164



11805
HOOD ROLLER
5/8" BOLT, 29MM O.D, 38MM LONG
OE# K066-360



11761
REAR MOTOR MOUNT KIT
5/8" BOLT, 50MM WIDE, 65MM TALL
KIT INCLUDES 2x 11539, BOLTS, NUTS, WASHERS
OE# K066-282, AV025TRP



11858
LEFT HOOD SUPPORT
SUIT T3 SERIES
USED WITH 11857 & 11545
OE# R85-1237, R85-1252



11705
HOOD MOUNT & VARIOUS
HOOD MOUNT / CABIN MOUNT
FUEL TANK CROSS BRACE / RADIATOR
5/8" BOLT, 76MM < 46MM O.D, 60MM TALL
OE# K066-176, K066-250, AV012TRP



12367
HOOD HINGE BUSH
1/2" BOLT, 33MM O.D, 51MM LONG
OE# L13-6018



11612
RADIATOR / CAB MOUNT
WITH METAL SLEEVE
5/8" BOLT, 66MM < 40MM O.D, 52MM TALL
OE# K066-177, M500-70NR



11523
RADIATOR MOUNT
WITH METAL SLEEVE
5/8" BOLT, 73MM < 46MM O.D, 33MM TALL
OE# K066-228, M601-70NR, K066-251




11548
RADIATOR STAY BUSH KIT
1x UPPER MOUNT, 1x LOWER MOUNT
OE# K264-84, K221-4992




11831
RADIATOR STAY BUSH
17MM I.D, 64MM < 40MM O.D, 21MM TALL
OE# J-8006-10



11554
CHARGED AIR COOLER MOUNT
WITH METAL SLEEVE
OE# M200-70EP



11709
ANTI-VIBRATION MOUNT
AIR INTAKE / HOOD / EXHAUST MOUNTS
1/2" BOLT, 44MM < 29MM O.D, 35MM TALL
OE# K066-218, K066-338, M300-70NR



11811
EXHAUST BUSHING KIT
SUIT T610
INCLUDES UPPER & LOWER BUSHES, SHAFT
WASHERS, CLIPS, BALL MOUNT & BRACKETS
OE# M13-6001, M13-1009, M13-6004



11726
TRANSMISSION MOUNT SPACER
SUIT TRANSMISSION SUPPORT SPRING
OE# K221-3694, K221-3941-08
E80-1012-008



34515
CAB MOUNT
OE# 512-3NS



18949
CAB MOUNT
OE# K066-498



11550
SHOCK ABSORBER BUSH
SUIT DAF / KENWORTH
AIRGLIDE REAR SUSPENSION - 4 PER SHOCK
OE# K066-266, K066-310



30507
SHOCK ABSORBER BUSH
SUIT KENWORTH
STEER AXLE SHOCK - 4 PER SHOCK
OE# 73D2002, M401754



31592
TRANSVERSE BEAM BUSHING
NEWAY SERIES AD-123, AD-126, AD-246
AD-252, AD-369, AD-378
64MM I.D, 98MM O.D, 133MM LONG
OE# 90008219, 90008006, R304252AR1172



14527
FRONT PIVOT BUSHING
NEWAY SERIES AD-123, AD-246, AD-369
64MM I.D, 98MM O.D, 146MM LONG
OE# 90008008



14514
FRONT PIVOT BUSHING
NEWAY SERIES AD-126, AD-252, AD-378
29MM I.D, 89MM O.D, 127MM LONG
OE# 900-08-151, 90008151, 900-08-252
90008252



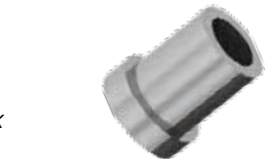
14532
FRONT PIVOT BUSHING
NEWAY SERIES AD-123, AD-246, AD-369
1-1/16" BOLT HOLE, 98MM O.D, 216MM LONG
OE# 900-08-175, 90008175



11733
SWAY BAR PIN & BUSH KIT
SUIT AIRGLIDE AG200
INCLUDES PIN, MOUNT & GREASE RETAINER
11766 INCLUDES CARRIER
OE# K066-461, K179-531, K345-5156



11766
SWAY BAR REPAIR KIT
SUIT AIRGLIDE AG200
INCLUDES PIN, MOUNT, CARRIER
GREASE RETAINERS
OE# K066-461, K179-531, K345-5156



11501
TRUNNION BUSH
SUIT KENWORTH BIG 6
102MM I.D, 127MM O.D, 123MM LONG
OE# K066-318, K066-232, KW6-50



11502
SWAY BAR BUSH
SUIT AIRGLIDE AG100
STANDARD BUSH
OE# K066-058, K066-293, K066-449



11719
SWAY BAR BUSH
SUIT AIRGLIDE AG100
OVERSIZED BUSH WITH TABS
OE# K066-058, K066-293, K066-449



11720
SWAY BAR BUSH
SUIT AIRGLIDE AG200
54MM SWAYBAR
OE# C13-1004, K066-450, K066-478




11743
SWAY BAR BUSH
SUIT KENWORTH / DAF
AIRGLIDE AG200 / 400 / 460 / 690
58MM SWAYBAR
OE# C13-1005, K066-460, K066-477



13518
TORQUE ROD BUSH
SUIT AIRGLIDE AG100
TORQUE ROD ASSEMBLY IS 11835
OE# 229610, 44697-000L, 44697-000



11729
TORQUE ROD BUSH
SUIT AIRGLIDE 200 / 400 / 460 / 690
DESIGNED FOR KW TORQUE ROD ASSY
TORQUE ROD ASSEMBLY IS 11773
OE# 839310, 836940, TRB68250



13520
SWAY BAR / TORQUE ROD
SWAYBAR AG100 / 400 / 460 / 690
SWAYBAR ARM AG200
SUIT TORQUE ROD AG100
STANDARD VERSION OF 83520



83520
SWAY BAR / TORQUE ROD
SWAYBAR AG100 / 400 / 460 / 690
SWAYBAR ARM AG200
SUIT TORQUE ROD AG100
EASY MOUNT VERSION OF 13520



11511
TORQUE ROD BUSH
SUIT KENWORTH BIG 6
5/8" BOLT, 89MM BUSH O.D.
OE# 37-99-344, 37-41-295-60



11514
TORQUE ROD BUSH
SUIT KENWORTH BIG 6
5/8" BOLT, 105MM BUSH O.D.
OE# K195-415-13, K066-259, 932420



11835
TORQUE ROD ASSEMBLY
SUIT AIRGLIDE AG100
REPLACEABLE BUSHES 83520 & 13518
OE# K195-376, 935720AA,



11773
TORQUE ROD ASSEMBLY
SUIT AIRGLIDE AG200 / 400 / 460 / 690
WITH REPLACEABLE BUSH 11729
OE# K195-474, K195-375