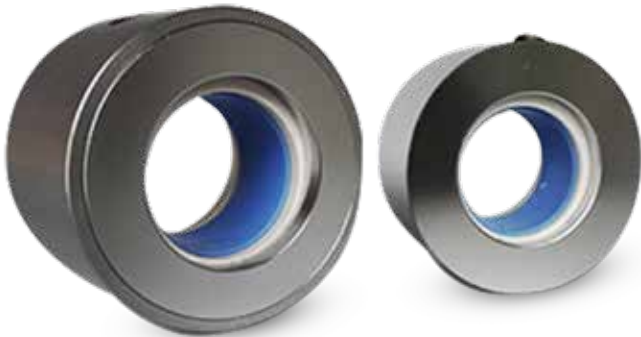


CINCHSEAL®

Stop Powder Leaks in a Cinch

CinchSeal® has a rotary shaft seal design to accommodate the screw conveyor direct drive end. The "Cartridge" seal is designed to replace lip seals and packing on screw conveyor direct drive adapters. The CinchSeal cartridge seal can be easily press fit into your conveyor adapter plate without altering the adapters. Reduce your costly parts and repairs to the drive assembly and stop leaks. We have rotary shaft seals that cover the Dodge and Falk part numbers listed below. This rotary shaft seal is also air-purged by drilling and tapping the CEMA adapter housing for standard pipe thread and attaching an air line and regulator. Use the CinchSeal cartridge seal and stop powder leaks.

LEAKING ADAPTER



DODGE TXT

- » SCXT105/TXT1
- » SCXT205/TXT2
- » SCXT305/TXT3
- » SCXT405/TXT4
- » SCXT505/TXT5
- » SCXT605/TXT6
- » SCXT705/TXT7



DODGE TA

- » TA0107L
- » TA1107H
- » TA2115H
- » TA3203H
- » TA4207H
- » TA5215H
- » TA6307H
- » TA7315H



FALK SIZE:

- » 4107 & 5107
- » 4115 & 5115
- » 4203 & 5203
- » 4207 & 5207
- » 4307 & 5307
- » 4315 & 5315
- » 4407 & 5407
- » 4415 & 5415
- » 4507 & 5507
- » 4608 & 5608

CS-003_10.2021_AUST

GARLOCK

Master Distributor for CinchSeal
Australia and New Zealand

Tel: +61 2 9793 2511
Fax: +61 2 9793 2544
www.garlock.com

Industrial Gasket Solutions Ltd.

42 Hobill Avenue
Wiri, Auckland 2104
New Zealand

www.igs.co.nz
Tel: +64 9 574 5651
nzsales@igs.co.nz