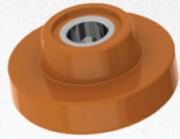
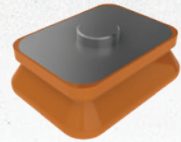


STEMCO GAFF products provide superior mechanical properties, outstanding chemical resistance, improved design features, and more extensive part coverage.

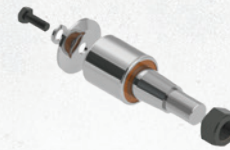
To suit **Mack**



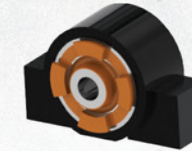
12000
Motor Mount
OE# 20QL1118A, 25167342
Included in kit #12034



12006
Load Pad Upper
OE# 25121508



12031
Torque Rod Bush
OE# 46735, 1688-229240



12052
Cab Mount
OE# 30QS3479AM, 20975430
20mm bolt hole



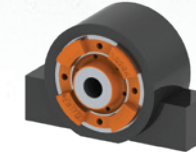
12034
Motor Mount Kit
OE# 204SX216
Includes 8 x #12000, bolts, nuts & washers



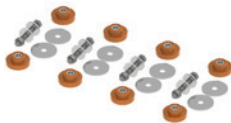
12010
Load Pad Upper
OE# 25115012, 10QK370



12051
Torque Rod Bush
Hendrickson #566557004
Suit Hendrickson



12084
Cab Mount
OE #20975430, 30QS4525AM
17mm bolt hole



12035
Motor Mount Kit
OE# 204SX389
Includes 8 x #12000, bolts, nuts & washers. Suit Fuller & Allison transmission.



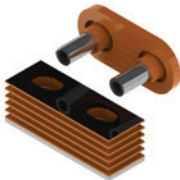
12014
Load Pad Lower
OE# 21036254, 10QK36B, 10QK388



12026
Radiator Mount
OE# 25121334, 20QL295M



40074
Carrier Bearing Assy
Suits 1810 application
Easy mount version
40197 available



12045
Motor Mount Kit Front
OE# 25172757, 25164809, 20QL322, 20QL329
Suit Mack CH models



12053
Load Pad
OE# 10QK32BP1



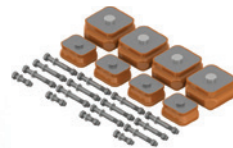
12032
Radiator Mount
OE# 25154049, 20QL259A



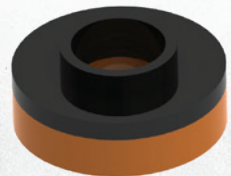
18566
Shock Absorber Bush
OE# 14QK136



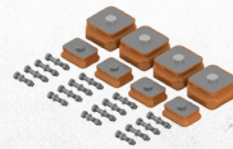
12002
Motor Mount
OE# 20QL2110, 20QL258



12036
Load Pad Kit
Kit components cross to
OE# 21036254, 25115012, 10QK36B, 10QK370



12046
Motor Mount Front
OE# 25164179, 20QL312M2



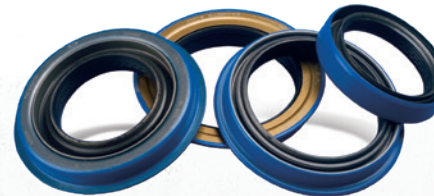
12039
Load Pad Kit
Kit components cross to
OE# 21036254, 10QK1065A, 10QK86B



11545
Hood Guide
OE #25QM31, 25160970



11611
Shifter Bushing Kit
Kworth OE# K3399
Pre-drilled



429-0002

Pinion Seal-input shaft

OE# 88AX458
ID 89.3mm, OD 114.8mm



429-0009

Pinion Seal-rear diff

OE# 88AX457
ID 70.2mm, OD 101.9mm

429-0008

Pinion Seal-through shaft

OE# 88AX456
ID 70.2mm, OD 90.1mm



K533M
Kingpin Kit

OE# 301SQ47B, 301SQ47
CPI, 301SQ47D, 301SQ47E
Suit axle codes FA-522, FA-5221,
FA-523, FA-5231, FA-532.
Can use lip seal tool #ST70-6

K616M
Kingpin Kit

OE# 301SQ52
FA-616, FA-617
Lip seal tool not applicable



KIT-104STM Bearing & Seal Kit - H/Duty Steer

OE# MACK7
Suit FAW18 H/Duty Steer (MFS)
Axle. Includes ASET6461A-20,
ASET5555-52A, 383-0164

KIT-101STM Bearing & Seal Kit - Drive

OE# MACK5, MACK5SP
Suit Eaton/Rockwell Drive Axle
Includes ASET594A-92A,
ASET580-72, 393-0173

KIT-102STM Bearing & Seal Kit - Steer

OE# MACK6, MACK6SP
Suit FG941 Steer Axle. Includes
ASET049-011, ASET3782-20,
383-0136

KIT-103STM Bearing & Seal Kit - GP Trailer

OE# MACK12
Suit GP Trailer Axle. Includes
ASET248-210, ASET049-011,
373-0143

KIT-105STM Bearing & Seal Kit - Parallel Trailer

OE# MACK13
Suit Parallel Trailer Axle. Includes
2 x ASET445-410, 373-0123

1R12-092 Good Year Air Spring

Neway #90557027, Firestone
#W01-358-9082
Suit Neway

1R14-160 Good Year Air Spring

Neway #90557155,
Firestone #W01-358-9144
Suit Neway

1R12-403 Good Year Air Spring

HNKSN #57122-001 &
57122-002, Firestone
W01-358-9373
Suit Hendrickson HAS

1R12-1093 Good Year Air Spring

HNKSN #60271-002,
Firestone #W01-358-9663
Suit Hendrickson Primaax

1R12-419 Good Year Air Spring

Neway #90557215, 90557216,
Firestone #W01-358-9473
Suit AD246 suspension, no bracket

1R12-484 Good Year Air Spring

Neway #90557215, 90557216,
Firestone #W01-358-9473
Suit AD246 suspension, with
bracket

1R12-552 Good Year Air Spring

Neway #90557212,
Firestone #W01-358-9471
Suit AD246 suspension

1S5-164 Good Year Cab Air Spring

OE# 21128983
Suit Mack Titan

1S4-007 Good Year Cab Air Spring

OE# 2270533, Firestone
#W02-358-7031,
W02-358-7001

1S6-055 Good Year Cab Air Spring

OE# 21128980



WK4524QVHP Shoe Kit - Steer Axle

Meritor #KSMA2124524Q,
Meritor #KSMA3124524Q
Suit Meritor Q 16.5" x 5"
Includes hardware kit, 23,000lb rated

WK4720QVHP Shoe Kit - Steer Axle

Meritor #KSMA2124720QP,
Meritor #KSMA3124720QP
Suit Meritor Q Plus 16.5" x 5"
Includes hardware kit, 23,000lb rated

WK4715QVHP Shoe Kit - Steer Axle

Meritor #KSMA2124715QP,
Meritor #KSMA3124715QP
Suit Meritor Q Plus 16.5" x 6"
Includes hardware kit, 23,000lb rated

WK4515PVHP Shoe Kit - Drive & Trailer Axle

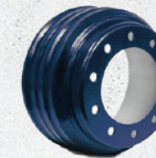
Meritor #KSMA2124515P/PSS,
Meritor #KSMA3124515P/PSS
Suit Meritor P 16.5" x 7"
Includes hardware kit & welded
washer, 23,000lb rated

WKS4515QVHP Shoe Kit - Drive & Trailer Axle

Meritor #KSMA2124515Q,
Meritor #KSMA3124515Q
Suit Meritor Q 16.5" x 7"
Includes hardware kit, 23,000lb rated

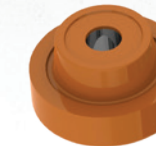
WKS4707QVHP Shoe Kit - Drive Axle

Meritor #KSMA2124707QP,
Meritor #KSMA3124707QP
Suit Meritor Q Plus 16.5" x 7"
Includes hardware kit, 23,000lb rated



89996B
Centrifuse Drum
Suit drive & trailer axle 16.5" x 7"
Lightweight, 40.5kg

91265B
Centrifuse Drum
Suit steer axle 16.5" x 6"
Lightweight, 40kg



12023
Motor Mount Rear
OE #20QL324M



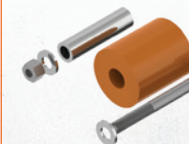
11768
Hood Latch
Mack OE #3QM313M2,
KWorth OE #37-41-295-60
Suit Mack & Kenworth



12004
Hood Mount
OE# 20QL2101



18455
Wheel Chock Standard
WD 140mm, HT 165mm, LG 220mm
Large version is 40095



11747
Rebound Roller Kit
HNKSN OE# 98758-001, 98758-001-2P
Suit HAS460, includes sleeve



12372
Motor Mount Rear
OE #20QL338M



393-0103 Voyager Seal - Drive

SKF# 45099, 45097
Suit SW34 Drive Axle

393-0104 Voyager Seal - Drive

SKF# 42672, 42671
Suit SW44 Drive Axle

383-0139 Voyager Seal - Steer

SKF# 39988, 39977
Suit FA537-538 Steer Axle
can use Grit Guard #320-2039

320-2039 Grit Guard Seal - Steer

SKF# 39988, 39977
Suit FA537-538 Steer Axle
can use Voyager #383-0139

393-0173 Voyager Seal - Drive

SKF# 47697, 47693, 47692,
47695
Suit Eaton/Rockwell Drive Axle

383-0136 Voyager Seal - Steer

SKF# 35066, 35103, 35058,
35059
Suit FG941 Steer Axle

383-0164 Voyager Seal - Heavy Duty Steer

SKF# 43764, 43765, 43761,
43763
Suit FAW18 H/Duty Steer (MFS)
Axle

393-0143 Voyager Seal - Drive

Suit S690 & S970 Tri Drive



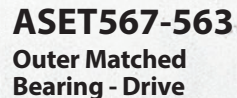
ASET47679-20 Outer Matched Bearing - Drive

Suit SW44 Drive Axle



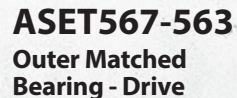
ASET582-572 Inner Matched Bearing - Drive

Suit SW34 Drive Axle



ASET049-011 Inner Matched Bearing - Steer

Suit FA537-538 Steer Axle
Also Suits GP trailer outer



ASET567-563 Outer Matched Bearing - Drive

Suit SW34 Drive Axle



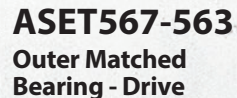
ASET45280-20 Outer Matched Bearing - Steer

Suit FA537-538 Steer Axle



ASET5282-20 Outer Matched Bearing - Drive

Suit SW34 Drive Axle



ASET449-410 Inner Matched Bearing - Drive

Suit SW44 Drive Axle

448-4836 Pro Torq Axle Nut - Steer

Suit FG941 Steer Axle
Replaces double nut system,
incl. keeper ring #450-4836

448-4865 Pro Torq Axle Nut - Heavy Duty Steer

Suit FAW18 H/Duty Steer (MFS) Axle
Replaces double nut system, incl.
keeper ring #450-4865

449-4973 Pro Torq Axle Nut - Drive

Suit Eaton/Rockwell Drive Axle
Replaces double nut system, incl.
keeper ring #450-4973



449-4904 Pro Torq Axle Nut - Drive

Suit SW34/SW44 Drive Axle
Replaces double nut system, incl.
keeper ring #450-4904

448-4839 Pro Torq Axle Nut - Steer

Suit FA537-538 Steer Axle
Replaces double nut system, incl.
keeper ring #450-4839